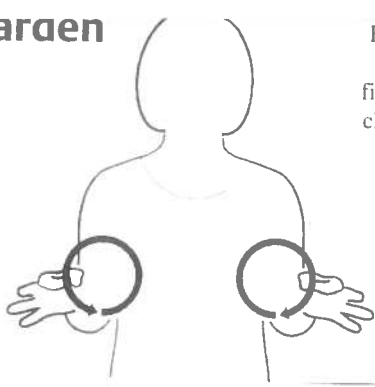


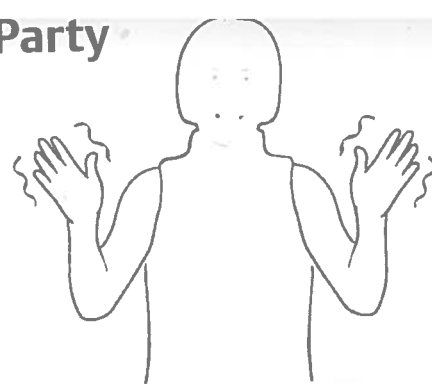
Garden



Both hands 'g' handshape, palms facing each other, fingers forwards in front of chest. Make small circular movements to sides with both hands.

ISL
Object

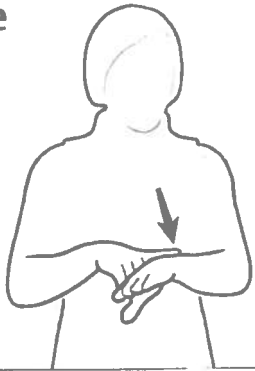
Party



Both hands 'd' handshape, palm facing each other at shoulder level. Rotate wrists.

Adapted
Object

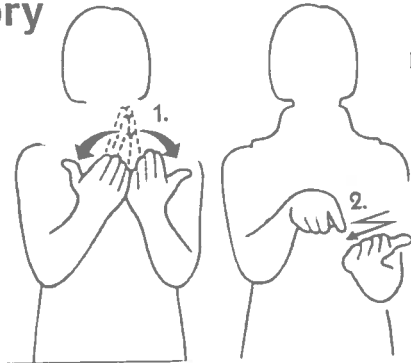
Time



L.H. 'l' handshape, palm down in front of chest. R.H. 'd' handshape, palm down. Tap right forefinger on back of left wrist once.

ISL
Object

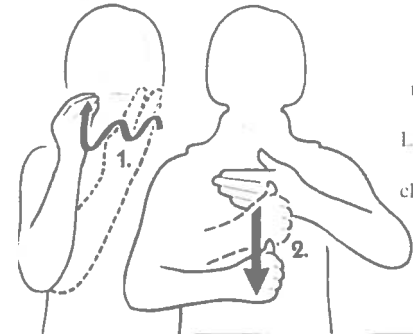
Story



Sign 'Book' the leave L.H. as is R.H. 'd' handshape palm out. Move R.H. in zig zag down in front of palm of L.H.

Adapted
Object

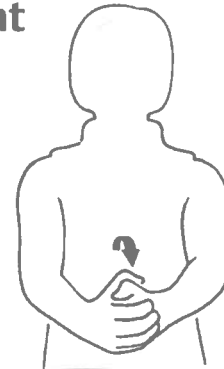
Christmas



R.H. 'bent 5' handshape, palm to self, fingers touching left jaw. Close to 'o' handshape. Do this movement 3 times as move around jawline from left to right.
L.H. 'l' handshape, palm to self, fingers sideways in front of chest. R.H. 'a' handshape, palm to self. Move right thumb down back of L.H.

Adapted
Object

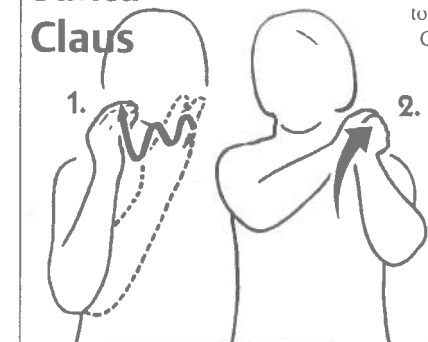
Present



L.H. 'a' handshape, palm sideways. R.H. clenched over L.H. Move out from body in an upward arc.

Adapted
Object

Santa Claus



R.H. 'bent 5' handshape, palm to self, fingers touching left jaw. Close to 'o' handshape. Do this movement 3 times as move around jawline from left to right.
Both hands 's' handshape, palms sideways one on top of the other in front of chest. Throw back over left shoulder together as if holding sack.

Adapted
People